



GUINNESS® STOREHOUSE

ACCESSIBILITY GUIDE



Get the facts. Be **DRINKAWARE** 
Visit drinkaware.ie



This is a guide to make your visit to Guinness Storehouse more accessible. This guide explains the journey through the building, and advise where there are high sensory areas. We offer sensory kits that include ear plugs and sunglasses at our reception should you need them. You can wear your own ear defenders and sensory equipment, or exit the tour at any point. Just ask a member of staff and they can assist you in leaving or finding a quieter area to sit.

The Guinness Storehouse is a fun and Exciting experience in the Liberties, Dublin



You can enjoy a self-guided tour through our seven floor experience, and have a drink in the Gravity Bar at the end.



OUR STAFF



Boston & John working in the Guinness Storehouse.
The visitor experience team wear a blue shirt, while
team leaders wear a grey jacket



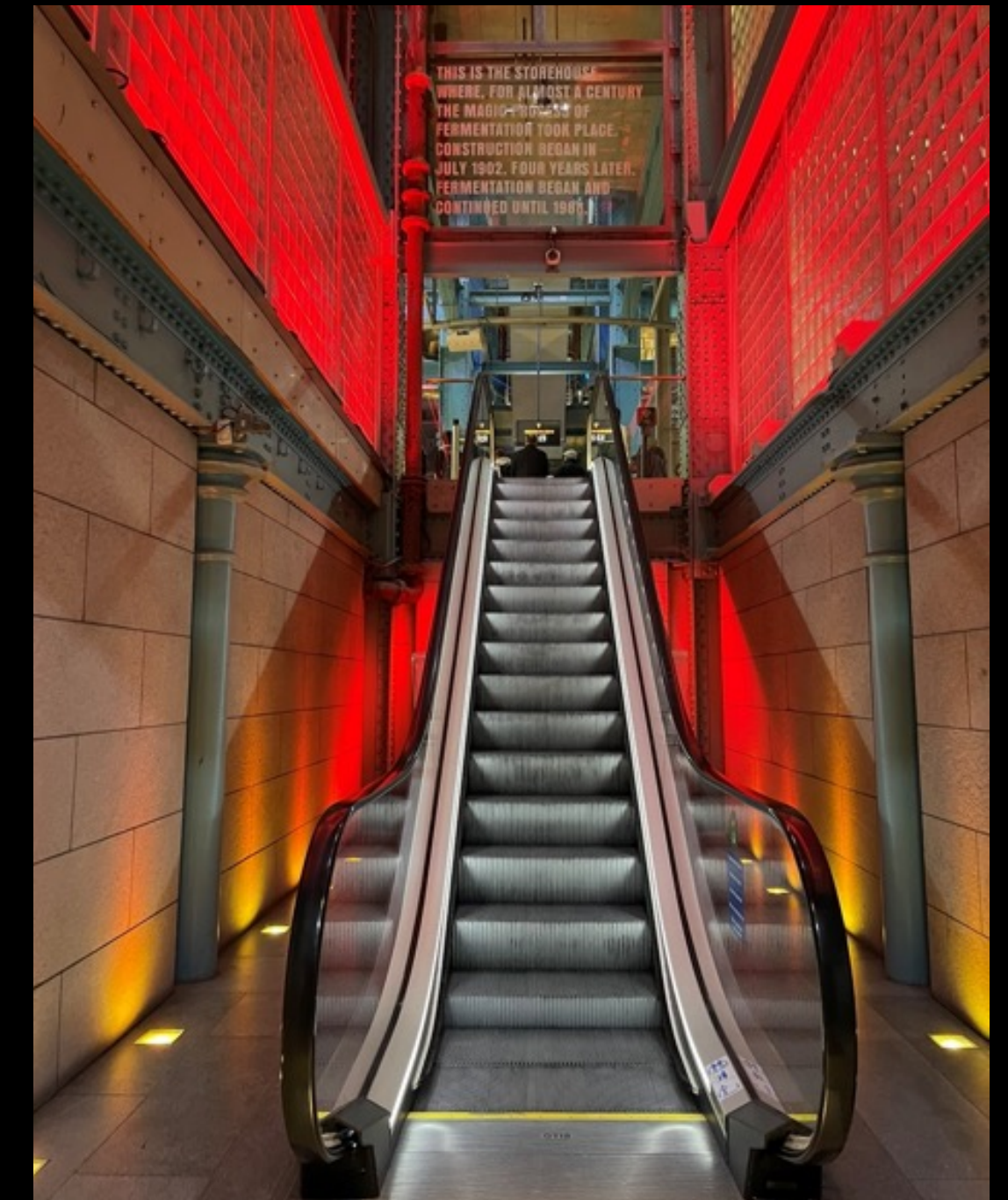
This is the outside area and entrance to Guinness Storehouse. You will enter here.

It is best to prebook tickets as then you will be able to avoid queueing, and sometimes we sell out.



ADMISSIONS & TICKETING

This is our reception area. Here you can show your tickets to a staff member, or buy tickets. Then you will take the escalator up to start the tour



GROUND FLOOR

This is the ground floor, where the start of the tour begins. There is an area where you access to audio guides, the retail shop, toilets (Men, Women & accessible) & elevators to the other floors. A staff member will introduce the tour on a microphone.



GROUND FLOOR

You will walk under a sign that says 'START' into the ingredients area. This is also where you can pick up an audio guide if you need one. Then you will go up two flights of stairs to the ingredients area



FIRST FLOOR

You will arrive at the ingredients floor and learn about how Guinness is made! The lighting is not too bright and this area does not have any artificial noise



FIRST FLOOR



The rest of this floor includes the cooperage area, which may be a bit noisy. There is also the Cooperage Café, where you can get a coffee or a snack



THE MAIN ATRIUM



There are escalators and lifts throughout the main atrium. This area might be a little loud. We offer earbuds at reception if you think you will need them



SECOND FLOOR



The second floor has a private function room, bathrooms and the tasting rooms. The tasting room is bright and has smells. A staff member will explain the tastes of Guinness. You will then go into a darker room

THIRD FLOOR

The third floor is advertising level.

Here you can see some animals that are in the ads, or watch some ads in the cinema room.

The cinema room is dark and loud.



FOURTH FLOOR



STOUTie, Guinness Academy and the Connoisseur Bar are on the fourth floor. Here you can learn how to pour a pint or get your face printed on a pint! There is one screen near the connoisseur bar that is quite loud, but you can walk past it quickly.



FIFTH FLOOR

Arthur's Bar, 1837 & Brewers Dining Hall restaurants are on the fifth floor

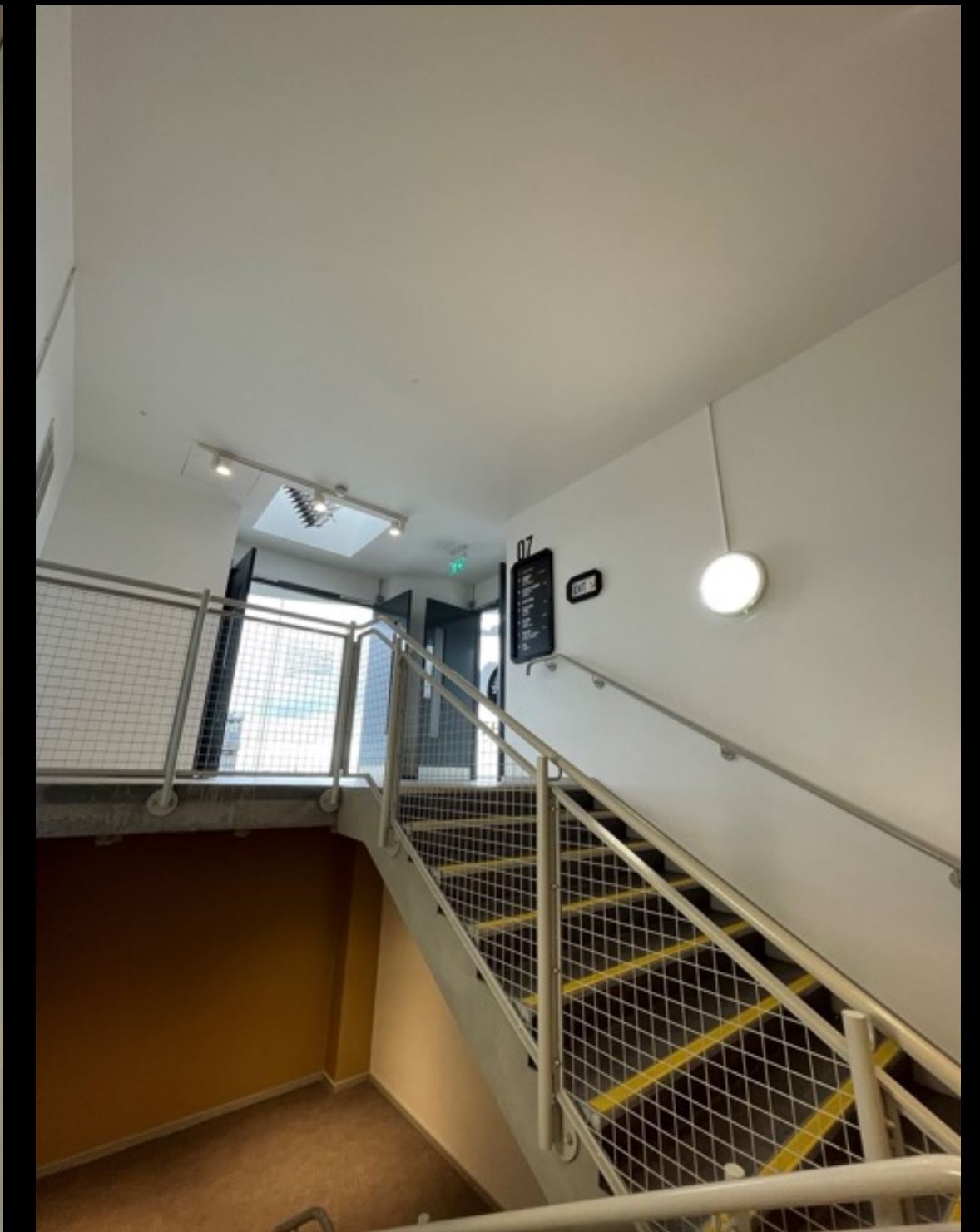
There is one area of screens showing how to make Guinness recipes, these screens are quite loud. There are also toilets on the fifth floor



SIXTH FLOOR



The sixth floor contains Bathrooms, elevators and stairs that leads to Gravity Bar on level 7



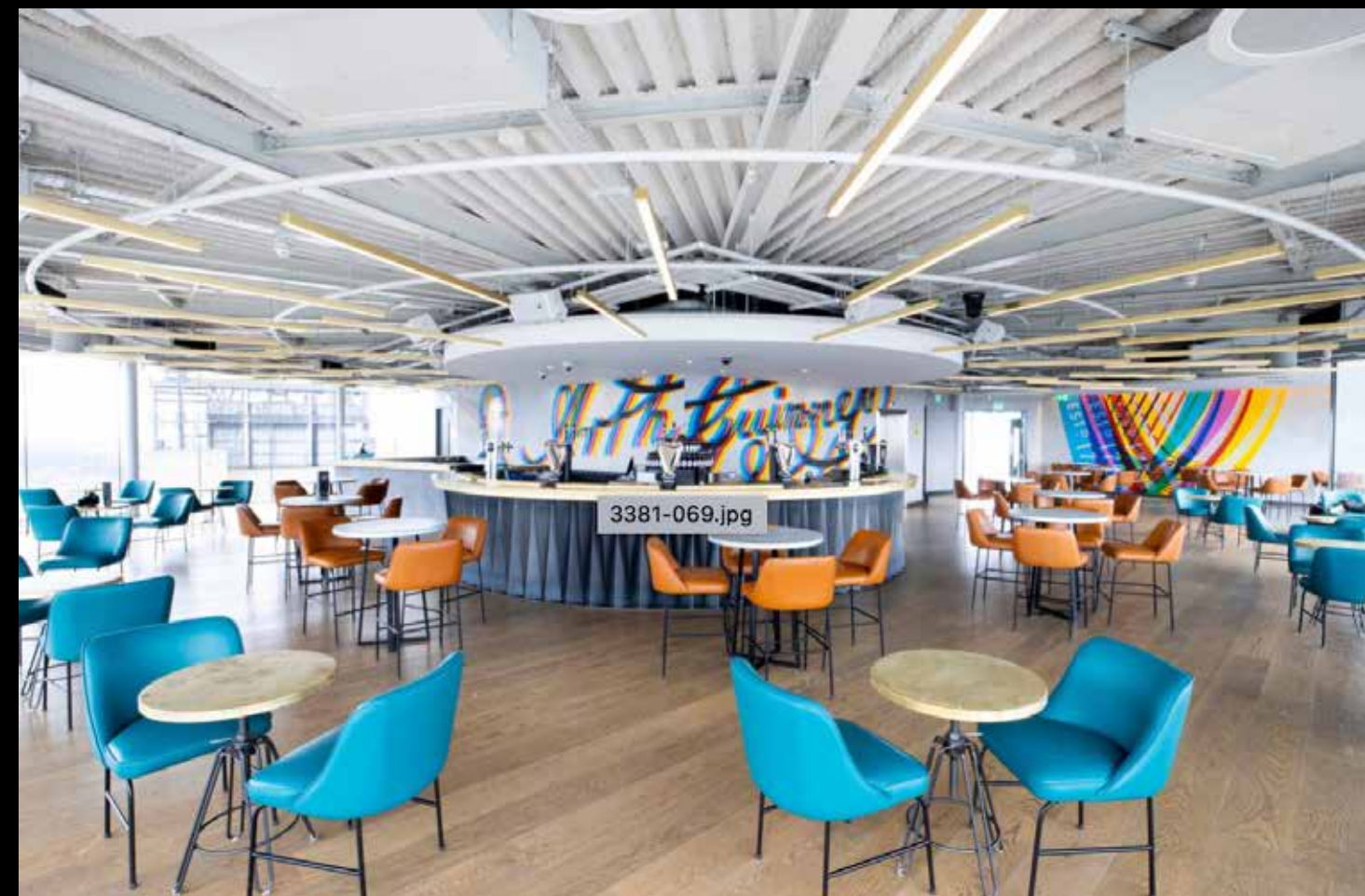
GRAVITY BAR



The Gravity Bar is on level 7. Here you can relax with a pint or soft drink after your tour!

The Gravity Bar can be quite busy and loud at times, and sometimes we have a dj or music.

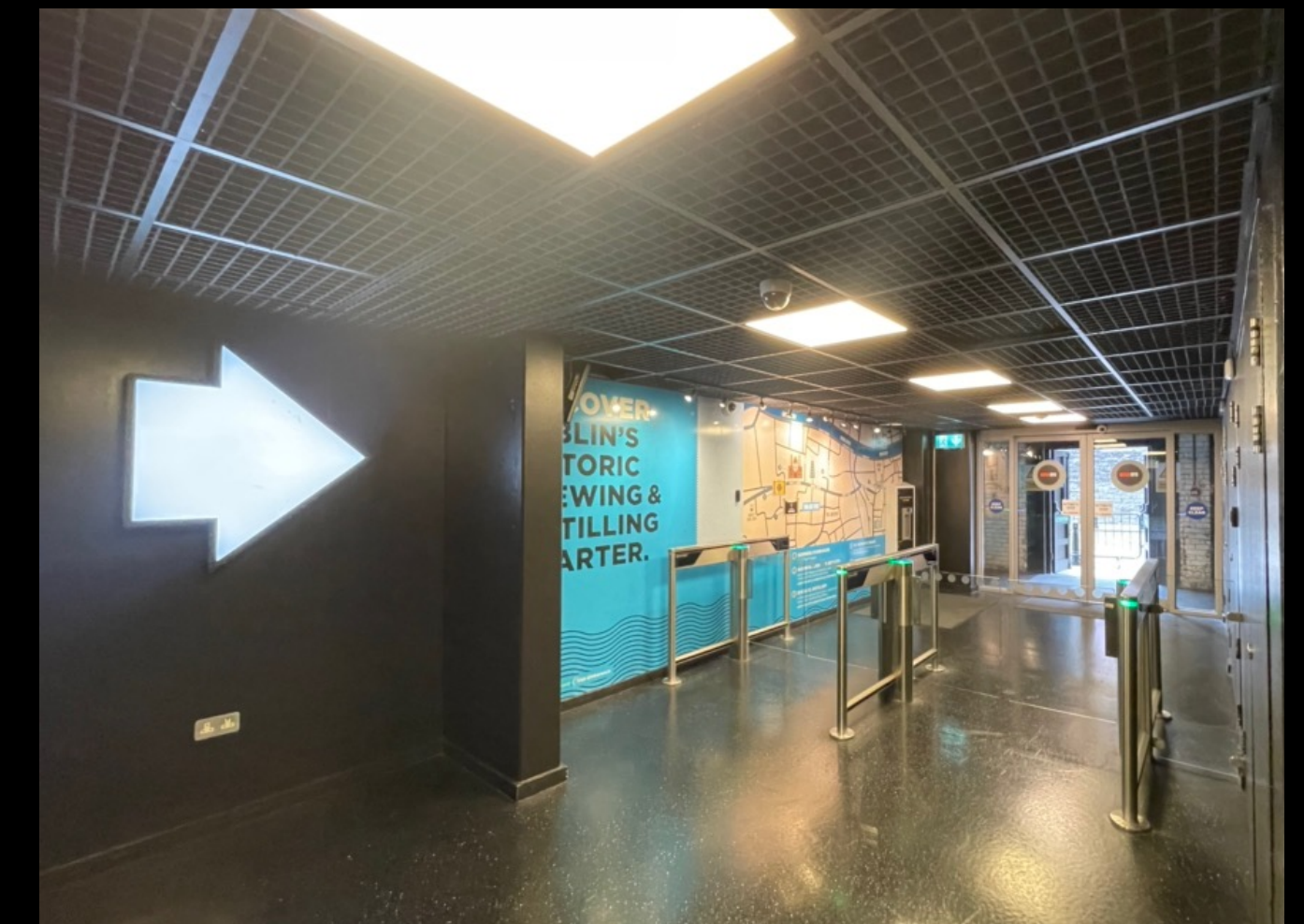
There is access to elevators and stairs for when you want to leave



EXIT THE BUILDING

When you are finished your tour, all stairs and elevators will bring you back to the ground floor.

This is the exit and outside area.





**WE LOOK FORWARD TO MEETING
YOU AT GUINNESS STOREHOUSE**

Get the facts. Be **DRINKAWARE** 
Visit drinkaware.ie